

Sustainable parking and charging

Save electricity, protect the climate – with the pioneering solar carports from IBC SOLAR.

Agenda

1

Introduction

2

Model series
Daylight, Blade and Model W

3

Solar carports benefits



1

Introduction

IBC SOLAR Solar-Carports.

Thank you very much for your inquiry. We appreciate your interest in the solar carports from IBC SOLAR and are providing you with some initial key data regarding your planned investment.

We would be happy to prepare a cost estimate for you and discuss site-specific influencing factors in a joint conversation. Based on all relevant information, we will create a tailor-made offer for you to make our future more sustainable.

Have sun!

Your Team IBC SOLAR



2

Model series
Daylight, Blade and Model W

System properties

The solar carports from IBC SOLAR are **quick and easy to install**, supported **various types of foundations**, as well as **PV modules up to 2 m²**. A **10-year warranty** is on top

Additional modules, such as water drainage and integrated lighting, can be added upon request.

IBC SOLAR offers you various system solutions in different sizes.



Model series Daylight, Blade and Model W.

A safe investment.

- ✓ Wind loads up to wind load zone 2
- ✓ Approved structural engineering
- ✓ TÜV Approval
- ✓ Corrosion resistance: Class C3
- ✓ Material: S235, S295, S350 und S355
- ✓ Trapezoidal sheet with general building approval (abZ)
- ✓ Requests from 10 parking spaces onwards
- ✓ 10-year warranty

Advantages of all model series

— Trapezoidal sheet roof or roof-integrated for glass-glass modules with general building approval (abZ)

Parking spaces can be freely selected

Occupancy example Type Daylight with 2.50 m, see illustration below.

— Various expansion options

Drainage to ground level

Lighting

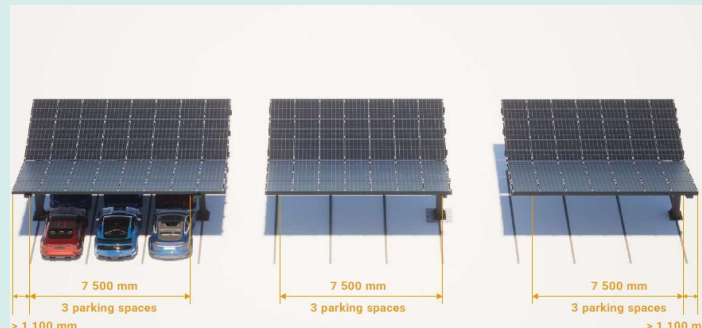
Collision protection

— RAL powder coating

Any desired color selectable

— Roof tightness

Through to the rail system and rubber seals, the roof-integrated version is rainproof.



Advantages of all model series

— Roof tightness

Through to the rail system and rubber seals, the roof-integrated version is rainproof.

— Coating

Galvanized steel: 10–25 μm
Hot-dip galvanized steel: >70 μm

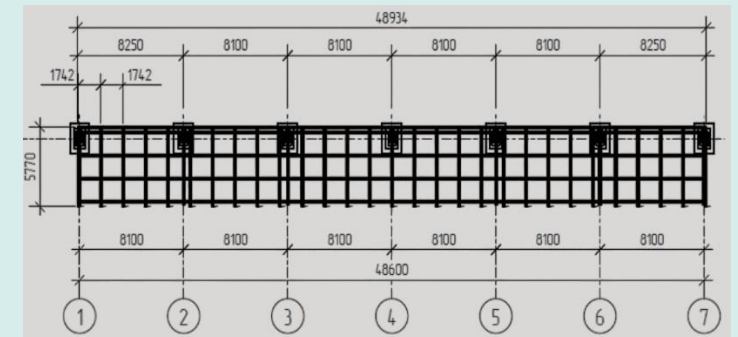
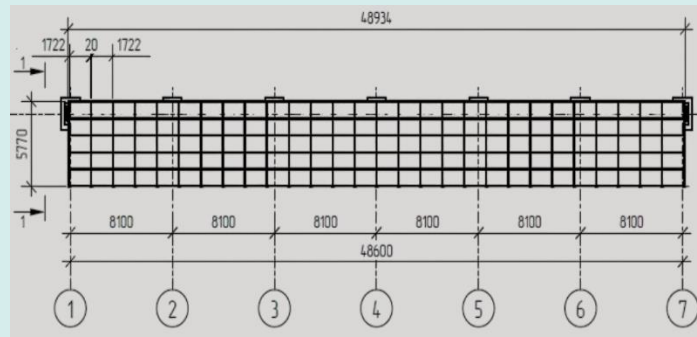
— Ground screws

Without major intervention in the existing infrastructure.

With a screw length of up to 8 m, always the perfect ground hold.

— Unlimited expandability

The system is adapted to your existing parking lot for optimal use of your space.



Technical details

— Model series Daylight

Entrance height: 3,975 mm

Clearance height: 2,950 mm

Parking space: 2.50 m x 5.50 m

Roof pitch: 10°

2 to 3 parking spaces between the supports with 5 m or 7.50 m spacing.

— Model series Blade

Entrance height: 3,590 mm

Clearance height: 2,300 mm - 2,600 mm

Parking space: Type L: 2.7 m x 5.8 m and Type Y: 2.57 m x 5.8 m

Roof pitch: 5° - 15°

2 to 3 parking spaces between the supports with 5.4 m or 8.10 m blade type L and 5.13 m or 7.70 m blade type Y

— Model series Modell W

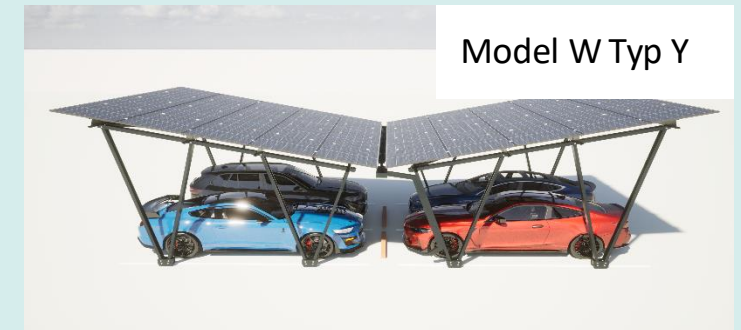
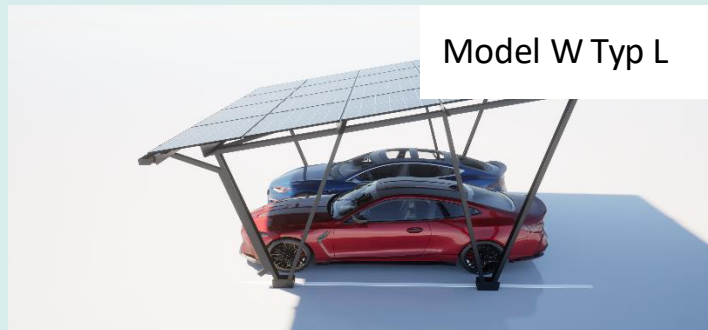
Entrance height: 3,975 mm

Clearance height: 2,950 mm

Parking space: 2.58 m x 5.30 m

Roof pitch: 12°

2 to 3 parking spaces between the supports with 5.15 m or 7.725 m spacing.



Additional module Drainage system

- ✓ Galvanized channels
- ✓ Integrated design
- ✓ Coating in any RAL colors

The data provided applies to all Daylight, Blade, and Model W variants unless otherwise specified.

— Downpipes Daylight

The water is drained through the hollow chamber in the column, so the drainage system is not visible.



— Downpipes Model W

The downpipes fit perfectly with the look. The drainage system blends inconspicuously and almost seamlessly into the system.



— Waterproofness

The integrated aluminum profile impresses with outstanding water resistance, thanks to its design and high-quality materials that prevent water from penetrating.



Additional module Lightning system

- ✓ Water protection class IP68
- ✓ According to DIN 67528
- ✓ 4000 K color temperature

The data provided applies to all Daylight, Blade, and Model W variants unless otherwise specified.

— Key figures

LED strip for 24V in a robust aluminum housing.

Power for 1 parking space approx. 28.8 W complete with a 220 V power supply unit.

The 4000 K warm light creates a cozy and relaxing atmosphere.

— Requirement

The lighting standards comply with the requirements of international standard DIN 67528.



Additional module Inverter, wall box, and drive-up protection

- ✓ Mounting bracket for the inverter
- ✓ Protective barriers are erected
- ✓ Placement of curb barriers

The data provided applies to all Daylight, Blade, and Model W variants unless otherwise specified.

— Cable Routing

The cable lines to the inverter run along the column.

The inverter is mounted in the middle of the column on special brackets through the entire bracket.

Or direct mounting on the structure.



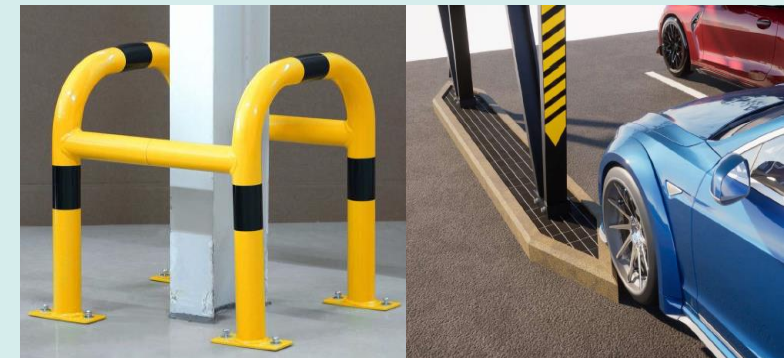
— Wallbox

These can be conveniently attached to the end plate of the support or to the cross brace.



— Approach protection

To improve the visual perception of the structure, stickers are affixed to the columns.



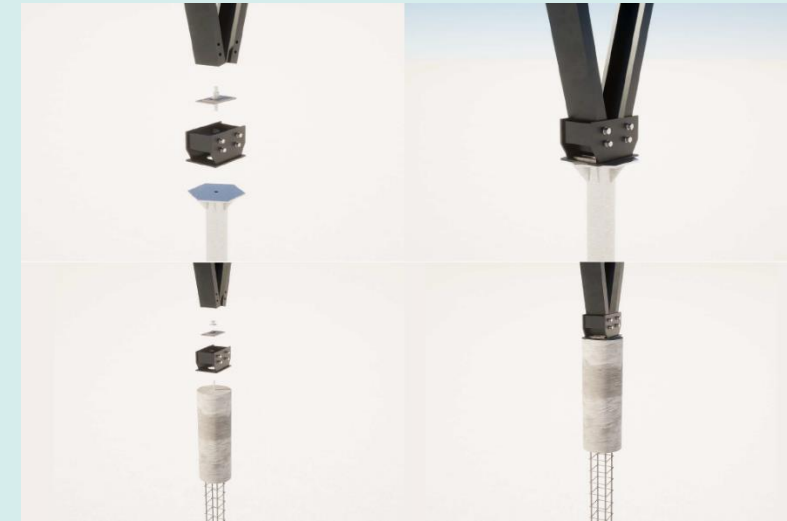
Additional module Foundation solutions

- ✓ Screw piles
- ✓ Reinforced concrete foundation
- ✓ Up to 8 m screw foundations

The data provided applies to all Daylight, Blade, and Model W variants unless otherwise specified.

— W, Blade & Daylight

If the existing ground is not strong enough to bear the loads with screw foundations alone, a combination of screw and reinforced concrete foundations is used.



— Screw piles

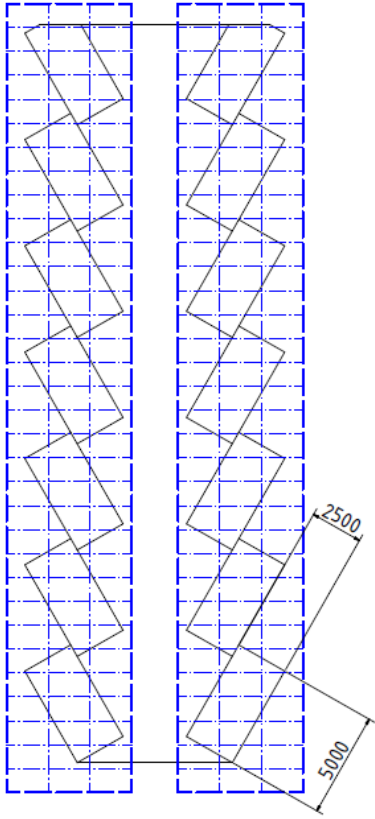
As a rule, construction without concrete is always possible.

With a length of up to 8 m, optimum floor support is always guaranteed.

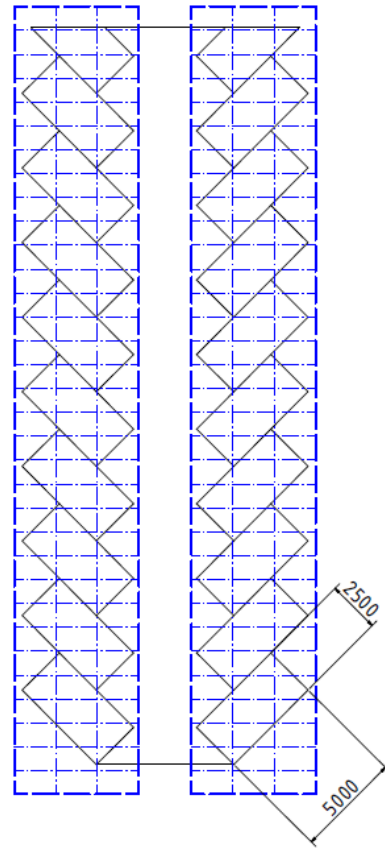


Occupancy examples

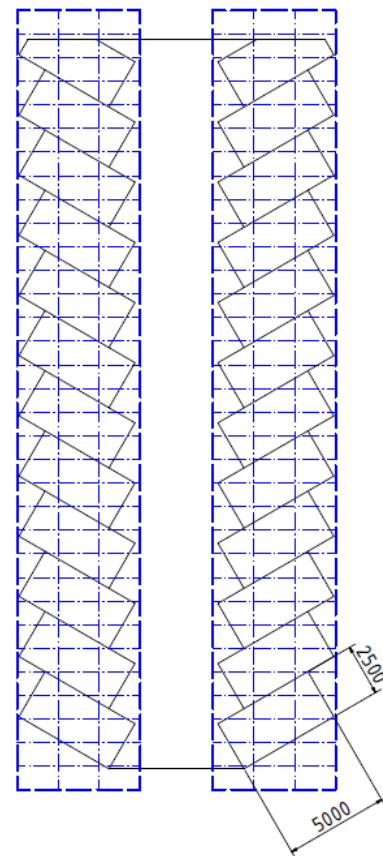
30° angle of entry



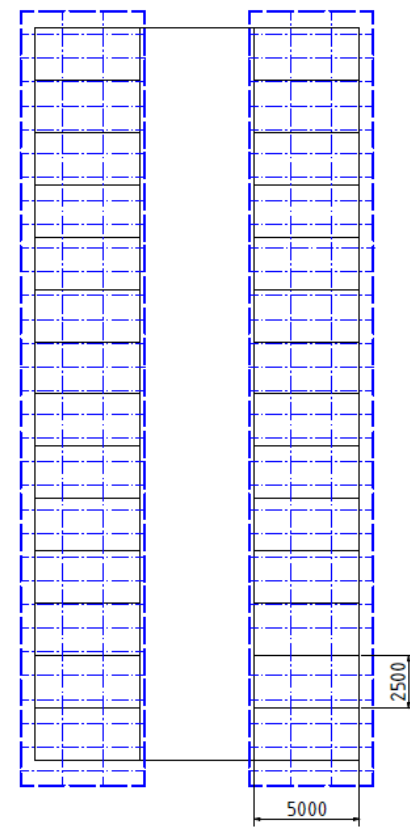
45° angle of entry



60° angle of entry



90° angle of entry I



The data provided applies to all Daylight, Blade, and Model W variants unless otherwise specified.

3

Solar carports benefits

Summary



- Parking space width: Free and 2.56 m
- Entrance height: 3.9 m and 3.8 m
- Roof pitch: 5°, 10°, 12°, and 15°
- Support spacing: 5.15 m, 7.73 m, 7.50 m, 7.70 m, and 8.10 m
- Trapezoidal sheet metal and roof-integrated
- Screw foundations



- TÜV approval
- Tested statics



With a wide range and numerous expansion options, the Daylight, Blade, and Model W series are ideal for any type of parking lot, whether new or existing.

— Your advantages for a secure investment.

And with IBC SOLAR as your strong partner at your side.

- ✓ An investment that pays for itself.
- ✓ Become an independent energy supplier with photovoltaics.
- ✓ Meaningful dual use of parking spaces.
- ✓ A profitable addition to your roof space.
- ✓ Be ecologically mobile.
- ✓ Protect vehicles and the environment.
- ✓ Soak up the sun. Produce electricity. Reduce costs.